



Kanardia

Flying with attitude *since 2006.*



AIRCRAFT INSTRUMENTS

Edition 2025



Kanardia

Flying with attitude *since 2006.*

Kanardia is developing and producing high performance avionics for ultralight aeroplanes, helicopters and autogyros.

The most important features of all our instruments are an intuitive, easy to use interface, lightweight design, reliable and fast hardware for competitive prices.



Indu

02



Digi EMS

04



Customizer app

05



Horis

06



Emsis

08



Aetos

10



Nesis 7"

12



Nesis 8,4"

14



Nesis 10"

16



Kliky

17



Nesis Maps, VFR Approach

18



Pilot checklists, Flight planning, Traffic information, External source connectivity

20



Accessories

24



INDU80

round instruments. A big diverse family of 57 and 80 mm gauges with an ability to personalise scales and LCD displays.



DESIGN
YOUR OWN
SCALE.
See page 5

450 €

20003432

AIRSPEED INDICATOR 80

weight 210 g
size 82 x 82 x 45 mm
power 105 mA



Optional with
integrated
backup battery
for **550 €**

20003623

Altimeter with
backup battery
can power an
additional Indu
indicator.

450 €

20003616

ALTIMETER 80

weight 240 g
size 82 x 82 x 55 mm
power 120 mA



450 €

20011970

VERTICAL SPEED INDICATOR 80

weight 210 g
size 82 x 82 x 45 mm
power 105 mA



DESIGN
YOUR OWN
SCALE.
See page 5

550 €

20005207

COMBO 80

weight 210 g
size 82 x 82 x 45 mm
power 105 mA



DESIGN
YOUR OWN
SCALE.
See page 5

370 €

20011727

TACHOMETER 80

weight 200 g
size 82 x 82 x 45 mm
power 105 mA



450 €

20006761

G-METER 80

weight 210 g
size 82 x 82 x 45 mm
power 105 mA



All instruments
are also available
as slaves for 350 €
in 57 or 80 mm
size.



DESIGN
YOUR OWN
SCALE.
See page 5

450 €

20003449

AIRSPEED INDICATOR 57

weight 160 g
size 62 x 62 x 45 mm
power 102 mA



450 €

20003586

ALTIMETER 57

weight 180 g
size 62 x 62 x 45 mm
power 110 mA



450 €

20012014

VERTICAL SPEED INDICATOR 57

weight 160 g
size 62 x 62 x 45 mm
power 102 mA



DESIGN
YOUR OWN
SCALE.
See page 5

550 €

20005221

COMBO 57

weight 200 g
size 62 x 62 x 45 mm
power 110 mA



DESIGN
YOUR OWN
SCALE.
See page 5

370 €

20011697

TACHOMETER 57

weight 150 g
size 62 x 62 x 45 mm
power 102 mA



450 €

20014001

G-METER 57

weight 160 g
size 62 x 62 x 45 mm
power 105 mA



DIGI EMS

on the market.

The lightest and the most compact engine monitoring system (EMS)



1030 €

20006020

DIGI EMS

weight	140 g
size	117 x 71 x 17 mm
power	170 mA

The kit consists of:

- Digi unit
- cables
- Engine Monitoring System

Add additional slave unit for

550 €

20006013



20006259

mini DAQU EMS unit

weight	82 g
size	75 x 45 x 30 mm
power	95 mA

For engines with ECU.
See pages 20, 21 for details.



20006273

DAQU EMS unit

weight	135 g
size	125 x 80 x 20 mm
power	102 mA

For all engines, up to 6 cylinders.
See pages 20, 21 for details.



150 €

20006068

LUMIS

weight	35 g
size	20 x 50 x 27 mm
power	10 mA

An accessory that allows you to adjust brightness.



75 €

20000424

BLU Bluetooth - CAN interface

weight	7 g
size	14 x 10 x 54 mm
power	25 mA

A necessity which allows you to update and configure Kanardia instruments.

CUSTOMIZER APP

Design your own INDU and DIGI layout.



Customize your **INDU SCALE & SCREEN** layout.



Free
desktop
and web
application.*

Customize your **DIGI SCREEN** layout.



Use **Kanja for Android** and **Kanardia BLU** to update your instrument.
Kanja App available on Google Play.

* Available from Kanardia website.

Power is defined as an electrical current at 12 V. All prices in the brochure are net prices without VAT, Incoterms®: Ex Works (EXW).
Prices are subject to change without prior notice.



HORIS

is a state-of-the-art AD-AHRS unit suitable for installation on standard aviation openings.



1150 €

20006983

HORIS 80 PFD

weight 250 g
size 82 x 82 x 52 mm
power 275 mA



1150 €

20006990

HORIS 57 PFD

weight 180 g
size 62 x 62 x 52 mm
power 140 mA

BEST SELLER

Both units available with integrated backup battery for **1250 €**

Horis 80 BU:
20013592
Horis 57 BU:
20007034

The kit consists of:

- Horis 80 or 57
- built-in AD-AHRS-GPS module
- cables, GPS antenna and OAT sensor on cable

Features:

- **LOGBOOK FUNCTION**
- **SD CARD UPDATE**
- sunlight readable display
- low power consumption
- compact design
- multi screen
- stable attitude during sustained turns (suitable for gliders)
- GNSS constellation view
- NMEA output



200 €

20002770

UPS-L

weight 176 g
size 81 x 47 x 32 mm

Adds battery backup to your Horis.

* Integrated LiFePO4 backup battery

Features:

- at least 1 h flight autonomy
- longer life cycle
- thermal and chemical stability, which improves battery safety
- eco friendlier
- constant discharge voltage
- robust and long-lasting battery



75 €

20000424

BLU Bluetooth - CAN interface

weight 7 g
size 14 x 10 x 40 mm
power 25 mA

A necessity which allows you to update and configure Kanardia instruments.



610 €

20007126

HORIS 80 *slave*

weight **230 g**
size **82 x 82x 52 mm**
power **250 mA**



610 €

20007096

HORIS 57 *slave*

weight **156 g**
size **62 x 62x 52 mm**
power **100 mA**



450 €

20008697

MAGU *tail*

weight **57 g**
size **62 x 62 x 23 mm**
power **25 mA**

Adds wind indication and true heading.
Nose/tail install available.



PFD screen



DI screen



G-meter screen



Chrono screen



EMSIS 80

is a simple and proven instrument used as **PFD (primary flight display)** or as **EMS (engine monitoring system)** that fits into standard 80 mm hole.



**EDITABLE
COLOR
RANGES**



Features:

- sunlight readable display
- low power consumption
- personalized layout
- logbook
- stable attitude during sustained turns (PFD)
- chart support (PFD)
- real-time engine monitoring (EMS)
- compatible with several engines (EMS)

1250 €

20006556

EMSIS 80 PFD

weight **298 g**
size **82 x 82 x 65 mm**
power **150 mA**

The kit consists of:

- Emsis 80
- built-in AD-AHR5-GPS module
- cables, GPS antenna and OAT sensor on cable

1190 €

20013912

EMSIS 80 EMS

weight **230 g**
size **82 x 82 x 45 mm**
power **140 mA**

The kit consists of:

- Emsis 80
- cables
- Engine Monitoring System

EMSIS
80 PFD/EMS
combined
1730 €

450 €

20008680

MAGU nose

weight **57 g**
size **62 x 62 x 23 mm**
power **25 mA**

Adds wind indication and true heading.
Nose/tail install available.



20006273

DAQU EMS unit

weight **135 g**
size **125 x 80 x 20 mm**
power **102 mA**

For all engines, up to 6 cylinders.
See pages 22, 23 for details.





EMSIS 3.5

is a simple and proven instrument used as **PFD (primary flight display)** or as **EMS (engine monitoring system)** that features bigger display.



**EDITABLE
COLOR
RANGES**



Features:

- sunlight readable display
- low power consumption
- personalized layout
- logbook
- stable attitude during sustained turns (PFD)
- chart support (PFD)
- real-time engine monitoring (EMS)
- compatible with several engines (EMS)

1330 €

20006501

EMSIS 3.5 PFD

weight **312 g**
size **112 x 69 x 65 mm**
power **170 mA**

The kit consists of:

- Emsis 3.5
- built-in AD-AHR5-GPS module
- cables, GPS antenna and OAT sensor on cable

1270 €

20006495

EMSIS 3.5 EMS

weight **235 g**
size **112 x 69 x 45 mm**
power **130 mA**

The kit consists of:

- Emsis 3.5
- cables
- Engine Monitoring System

EMSIS
35 PFD/EMS
combined
1810 €

20006259

mini DAQU EMS unit

weight **82 g**
size **75 x 45 x 30 mm**
power **95 mA**

For engines with ECU.
See pages 22, 23 for details.





AETOS

provides you with crystal clear 7" PFD and reliable EMS.



2890 €

20003289

AETOS PFD/EMS kit

weight **700 g**
size **190 x 125 x 40 mm**
power **800 mA**

The kit consists of:

- Aetos (7" touch display)
- built-in AD-AHRS-GPS module
- cables, GPS antenna and OAT sensor on cable
- Engine Monitoring System

Features:

- **TOUCHSCREEN SUNLIGHT READABLE DISPLAY**
- **EDITABLE LAYOUT**
- energy efficient
- fast multicore processor
- illuminated buttons
- higher screen resolution
- logbook
- Flarm/ADS-B support
- 3D terrain
- Wi-Fi support for METAR and software updates
- USB tethering support for software updates
- NMEA output
- real-time engine monitoring (EMS)
- compatible with several engines (EMS)

20006259

mini DAQU EMS unit

weight **82 g**
size **75 x 45 x 30 mm**
power **95 mA**

For engines with ECU.
See pages 22, 23 for details.

20006273

DAQU EMS unit

weight **135 g**
size **125 x 80 x 20 mm**
power **102 mA**

For all engines, up to 6 cylinders.
See pages 22, 23 for details.

AETOS

www.kanardia.eu



AETOS



1520 €

20003296

AETOS *slave*

weight 670 g
size 190 x 125 x 40 mm
power 770 mA

450 €

20008697

MAGU *tail*

weight 57 g
size 62 x 62 x 23 mm
power 25 mA

Adds wind indication and true heading.
Nose/tail install available.



200 €

20002787

UPS-U

- sealed lead acid battery for currents up to 1.2 A
- suitable for Nesis, Emsis, Aetos or a set of more instruments



Power is defined as an electrical current at 12 V. All prices in the brochure are net prices without VAT, Incoterms®: Ex Works (EXW). Prices are subject to change without prior notice.

 **Kanardia**



NESIS 7"

*the Nesis family of avionics
is a self-contained state-of-the-art navigation instrument
optimized for ultralight aeroplanes, autogyros and helicopters.
All units are lightweight with low power consumption.*



4190 €

20009021

NESIS III ae 7" PFD/EMS kit

weight **745 g**
size **190 x 125 x 40 mm**
power **690 mA**

The kit consists of:

- Nesis (7" touch display)
- built-in AD-AHRS-GPS module
- cables, GPS antenna and OAT sensor on cable
- Engine Monitoring System

Features:

- **EDITABLE LAYOUT**
- touchscreen, sunlight readable display, energy efficient, fast multicore processor, slim housing
- higher screen resolution, illuminated buttons
- personalized layout, logbook
- Flarm/ADS-B support, 3D terrain, multiple maps support, Wi-Fi support for METAR, map and software updates, USB tethering support for map and software updates, NMEA output
- real-time engine monitoring, compatible with several engines (EMS)
- radio support, integrated video input
- pilot checklists (see page 20)
- flight planning (see page 21)
- ADS-B GDL 90 support (see page 22)
- external source connectivity (see page 23)

20006259

mini DAQU EMS unit

weight **82 g**
size **75 x 45 x 30 mm**
power **95 mA**

For engines with ECU.
See pages 22, 23 for details.



20006273

DAQU EMS unit

weight **135 g**
size **125 x 80 x 20 mm**
power **102 mA**

For all engines, up to 6 cylinders.
See pages 22, 23 for details.



NESIS 7"

www.kanardia.eu



NESIS



2220 €

20009083

NESIS III ae 7" slave

weight 670 g
size 190 x 125 x 40 mm
power 650 mA

450 €

20008697

MAGU tail

weight 57 g
size 62 x 62 x 23 mm
power 25 mA

Adds wind indication and true heading.
Nose/tail install available.



200 €

20002787

UPS-U

- sealed lead acid battery for currents up to 1.2 A
- suitable for Nesis, Emsis, Aetos or a set of more instruments



Power is defined as an electrical current at 12 V. All prices in the brochure are net prices without VAT, Incoterms®: Ex Works (EXW). Prices are subject to change without prior notice.

 **Kanardia**



NESIS 8.4"

The Nesis family of avionics is a self-contained state-of-the-art navigation instrument optimized for ultralight aeroplanes, autogyros and helicopters. All units are lightweight with low power consumption.

4620 €

20009007

NESIS III ae PFD/EMS kit

weight **1095 g**
size **215 x 175 x 40 mm**
power **820 mA**

The kit consists of:

- Nesis III (8.4" touch display)
- built-in AD-AHRS-GPS module
- engine monitoring system
- cables, GPS antenna and OAT sensor on cable

Features:

- **EDITABLE LAYOUT**
- touchscreen, sunlight readable display, energy efficient, fast multicore processor, slim housing
- personalized layout, logbook
- Flarm/ADS-B support, 3D terrain, multiple maps support, Wi-Fi support for METAR, map and software updates, USB tethering support for map and software updates, NMEA output
- real-time engine monitoring, compatible with several engines (EMS)
- radio support, integrated video input
- pilot checklists (see page 20)
- flight planning (see page 21)
- ADS-B GDL 90 support (see page 22)
- external source connectivity (see page 23)



20006259

mini DAQU EMS unit

weight **82 g**
size **75 x 45 x 30 mm**
power **95 mA**

For engines with ECU.
See pages 22, 23 for details.



20006273

DAQU EMS unit

weight **135 g**
size **125 x 80 x 20 mm**
power **102 mA**

For all engines, up to 6 cylinders.
See pages 22, 23 for details.



NESIS 8.4"

www.kanardia.eu



NESIS



2650 €

20009076

NESIS III ae slave

weight 1045 g
size 215 x 175 x 40 mm
power 800 mA



1580 €

20019358

AUTOPILOT SERVO 8 Nm kit

weight 1246 g
size 2x 102 x 64 x 99 mm
power up to 5 A
(depending on torque)

Adds complete autopilot function.



450 €

20008680

MAGU nose

weight 57 g
size 62 x 62 x 23 mm
power 25 mA

Adds wind indication and true heading.
Nose/tail install available.



NESIS 10"

The Nesis family of avionics
is a self-contained state-of-the-art navigation instrument
optimized for ultralight aeroplanes, autogyros and helicopters.
All units are lightweight with low power consumption.



20006259

mini DAQU EMS unit



weight **82 g**
size **75 x 45 x 30 mm**
power **95 mA**

For engines with ECU.
See pages 22, 23 for details.



20006273

DAQU EMS unit

weight **135 g**
size **125 x 80 x 20 mm**
power **102 mA**

For all engines, up to 6 cylinders.
See pages 22, 23 for details.

**5490 €**

20020040

NESIS IV PFD/EMS kit

weight **1109 g**
size **260 x 160 x 45 mm**
power **1200 mA**

promotional price
4960 €

Promotional price valid
for orders accepted by
31.08.2025,
deliveries in 2025.

The kit consists of:

- **Nesis IV (10.1" touch display) with Kliky**
- built-in AD-AHRS-GPS module
- engine monitoring system
- cables, GPS antenna and OAT sensor on cable

Features:

- **EDITABLE LAYOUT**
- touchscreen, sunlight readable display, energy efficient, fast multicore processor, slim housing
- personalized layout, logbook
- Flarm/ADS-B support, 3D terrain, multiple maps support, Wi-Fi support for METAR, map and software updates, USB tethering support for map and software updates, NMEA output
- real-time engine monitoring, compatible with several engines (EMS)
- radio support, integrated video input
- pilot checklists (see page 20)
- flight planning (see page 21)
- ADS-B GDL 90 support (see page 22)
- external source connectivity (see page 23)

NESIS 10"



20020057

3520 €

NESIS IV slave

weight 1080 g
size 260 x 160 x 45 mm
power 1200 mA

The kit consists of:

- Nesis IV slave (10.1" touch display) with Kliky

promotional price

2990 €

Promotional price valid
for orders accepted by
31.08.2025,
deliveries in 2025.



20020064

KLIKY control unit

weight 85 g
size 102 x 44 x 20 mm
power n/a

Wired remote control device
for Nesis IV. The flexible installation
options ensure convenient and quick
access to the Nesis menu.





Free

KANARDIA MAPS

Vector worldwide maps.
Maps include OFM (open flight maps) data, where available.

Local language supported:



49-89 €

DFS MAPS

Austria	Benelux
Croatia	Czech Republic
Denmark	France
Germany	Hungary
Italy	The Netherlands
Poland	Portugal
Spain	Switzerland
RSA (Selected Regions: Johannesburg, Cape Town)	



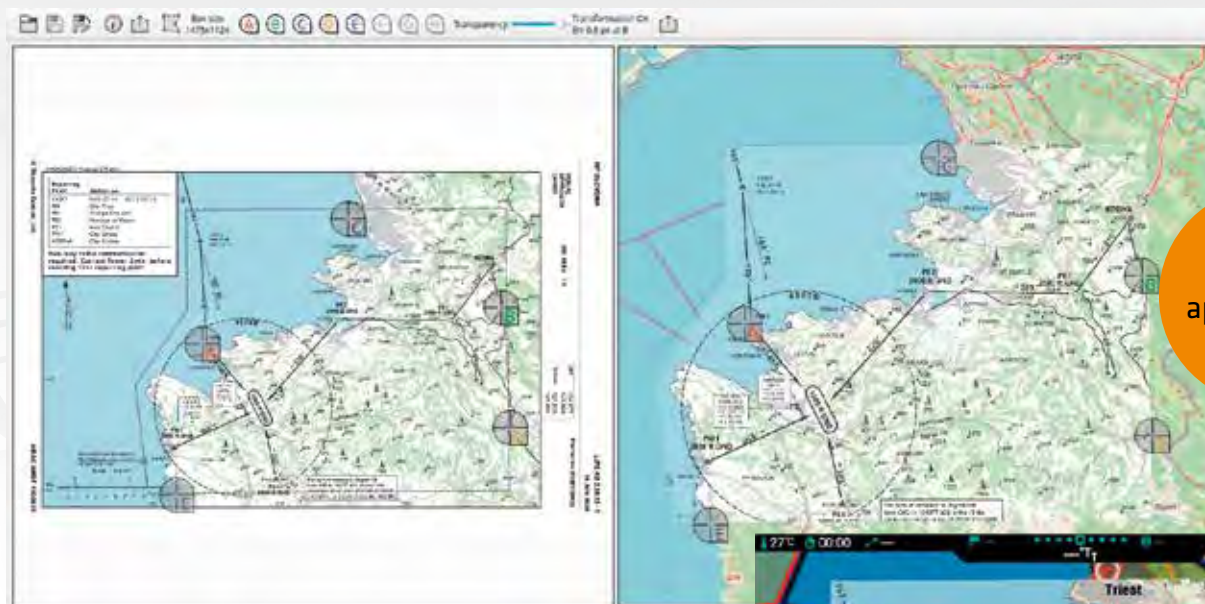
Free

USA MAPS

FAA US sectional charts

APPROACHER APP

Use VFR Approach Maps in Nesis.



Free application.*

Use **APPROACHER APP** to prepare a VFR Approach Map for use in Nesis.



Approach Map on Nesis.

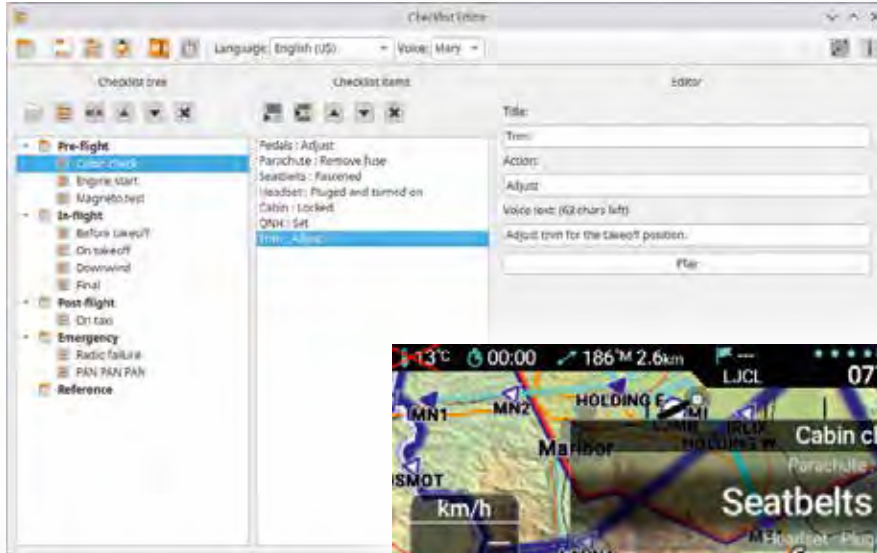
* Available from Kanardia website.

Power is defined as an electrical current at 12 V. All prices in the brochure are net prices without VAT, Incoterms®: Ex Works (EXW). Prices are subject to change without prior notice.



PILOT CHECKLISTS

Interactive pilot checklist with visual and audio guidance.



Visual & Audio Guidance

Nesis guides you through each step with clear spoken instructions, keeping you focused on flying.



Customized Checklists

Create and import personalized checklists for all flight phases with an easy-to-use editor.



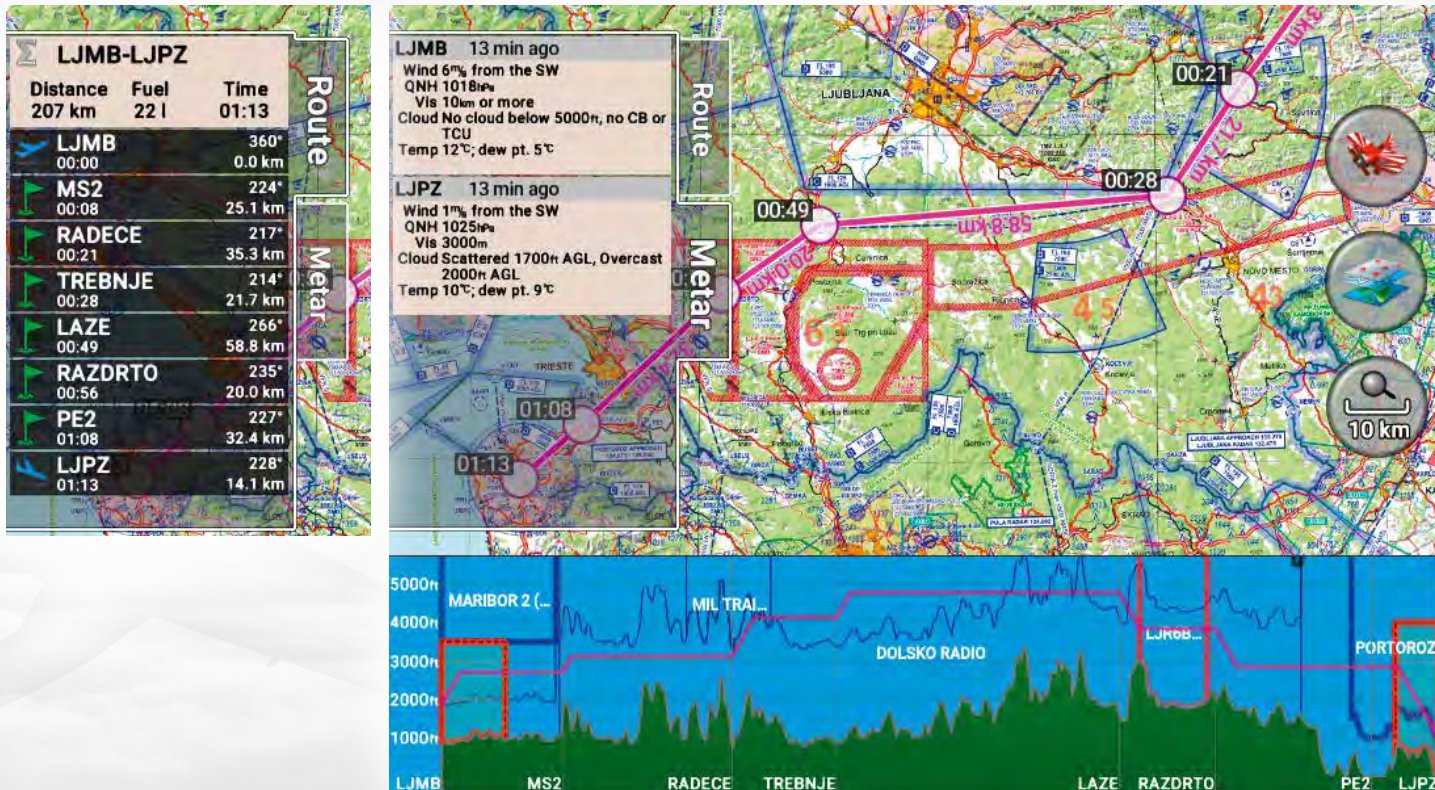
Step-by-Step Confirmation

Confirm steps directly on Nesis or via the Joyu stick.



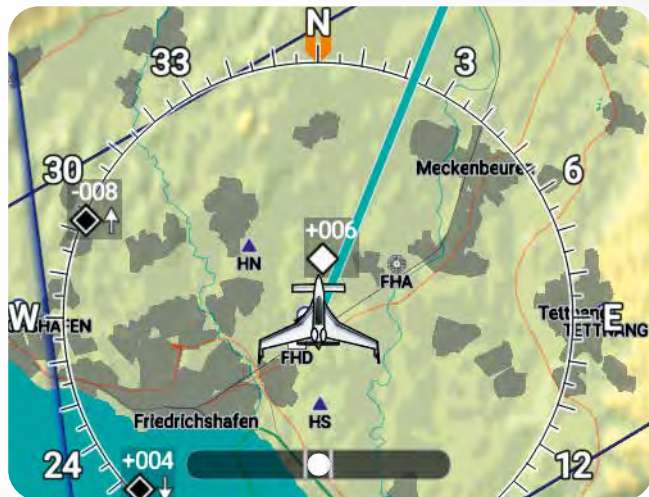
FLIGHT PLANNING

Simple and intuitive route planning using the touch screen.





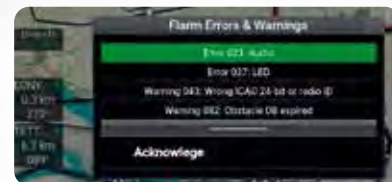
TRAFFIC INFORMATION



Detected aircraft are displayed on the moving map screen.



Device information.



Device warnings and diagnostic.

GDL 90

- Stratux ADS-B
- SkyEcho
- and any other GDL 90 device over Wi-Fi

FLARM

- PowerFLARMs
- AT-1 by AIR Avionics
- f.u.n.k.e.
- and other FLARM compatible devices



In the case of danger, a warning window pops up and stays on display until the threat disappears.
Not available for GDL 90.

EXTERNAL SOURCE CONNECTIVITY

 **SkyDemon** + some other external devices



Options:

- Import route from external source to Nesis/Amigo.
- Live waypoint tracking capability



Nesis or Amigo

- 1. Plan**
- 2. Connect**
- 3. Fly!**



+ Kanardia RS232 dongle

* The SkyDemon logo and image are used in this catalog with permission from SkyDemon Ltd. All rights reserved.
Power is defined as an electrical current at 12 V. All prices in the brochure are net prices without VAT, Incoterms®: Ex Works (EXW).
Prices are subject to change without prior notice.



750 €

20003722

AMIGO

horizontal autopilot panel

weight	170 g
size	100 x 48 x 30 mm
power	170 mA

Bright, easy to read display and intuitive button arrangement.



750 €

20003739

AMIGO

vertical autopilot panel

weight	170 g
size	100 x 48 x 30 mm
power	170 mA

Bright, easy to read display and intuitive button arrangement.

Works great with:



✓ Nesis 10"



✓ Nesis 8,4"



✓ Nesis 7"



✓ Aetos



✓ Emsis



✓ Horis

AMIGO 80



750 €

20020002

AMIGO 80

standard 80 mm autopilot panel

weight	244 g
size	82 x 82 x 52 mm
power	250 mA

Bright, easy to read display and intuitive button arrangement on that fits on standard aviation opening.

Works great with:



✓ Nesis 10''



✓ Nesis 8,4''



✓ Nesis 7''



✓ Aetos



✓ Emsis



✓ Horis



JOYU / BOXI



350 €

20008413

JOYU remote controller

weight 155 g
size 140 x 65 x 45 mm
power 25 mA

Adds remote control capability to your Nesis, Emsis or Aetos. In connection with Boxi it enables trim control.

- user configurable
 - improved design
- For standalone operations, too.



200 €

20004217

BOXI II controller

weight 88 g
size 80 x 75 x 21 mm
power 30 mA

Controls pitch and roll electrical trims and radio transmission.



Also available
for installation
on Yoke or
directly on
dashboard.

AUTOPILOT



790 €

20019358

AUTOPILOT SERVO 8 Nm

weight	623 g
size	102 x 64 x 99 mm
power	up to 5 A depending on torque



Adds autopilot function for one axis with integrated clutch.
Offering no resistance when disconnecting Autopilot.



Integrated
clutch,
no resistance.

Works great with:



✓ Nesis 10"



✓ Nesis 8,4"



✓ Nesis 7"



✓ Aetos



✓ Emsis



✓ Horis



DAQU

is a versatile engine data acquisition unit.



800 €

20006273

DAQU EMS unit

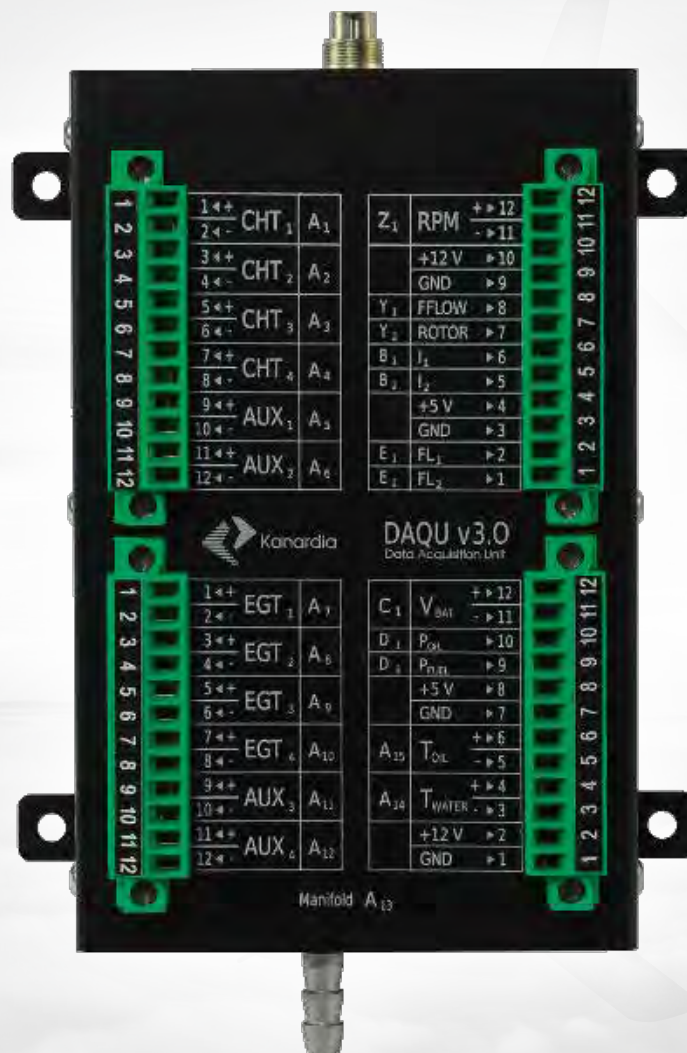
weight 135 g
size 125 x 80 x 20 mm
power 102 mA

Daqu measures pressures, temperatures, RPM's, voltages, currents, fuel levels and flows and much more. For all engines up to 6 cylinders.



Supported engines:

- **Rotax 912UL/s**
- **Lycoming/Continental**
- **Jabiru**
- **D-motor**
- **All engines with carburetor up to 6 cyl**





MINI DAQU / DAQU ECU



800 €

20006259

mini DAQU EMS unit

weight 82 g
size 75 x 45 x 30 mm
power 95 mA

mini Daqu obtains most engine implementation data from ECU. In addition, various supplementary sensors can be connected (fuel level, pressures, temperatures, voltages and much more). For modern engines with ECU.

Additional features:

- digital RPM output signal for propeller pitch controller
- external switch can be used:
 - for automatic Rotax iS start switch
 - to trigger an external alarm

Supported engines:

- **Rotax 912/915/916iS**
- **UL Power**
- **MWfly**
- **Geiger Wankel A2-74**
- **some electric engines**



800 €

20006327

DAQU ECU EMS unit

weight 135 g
size 125 x 80 x 20 mm
power 102 mA

There are cases, where mini Daqu is not enough and a modified standard Daqu steps in. Standard Daqu has much more channels, but it does not have an ECU connection. For this reason, a modified version of standard Daqu was developed, which allows connection to ECU's with a CAN bus (Rotax iS, for example). Modifications include removing the manifold pressure sensor and installing an additional connector. This connector is used to connect to the ECU CAN bus. In most cases, this is a Rotax iS engine.

Supported engines:

- **Rotax 912/915/916iS**
- **UL power**
- **for ECU equipped engines**





Kanardia

Flying with attitude *since 2006.*

Kanardia d.o.o. • Lopata 24a • 3000 Celje • Slovenia • +386 40 190 951 • info@kanardia.eu • www.kanardia.eu

All Kanardia instruments are designed and manufactured in the EU.